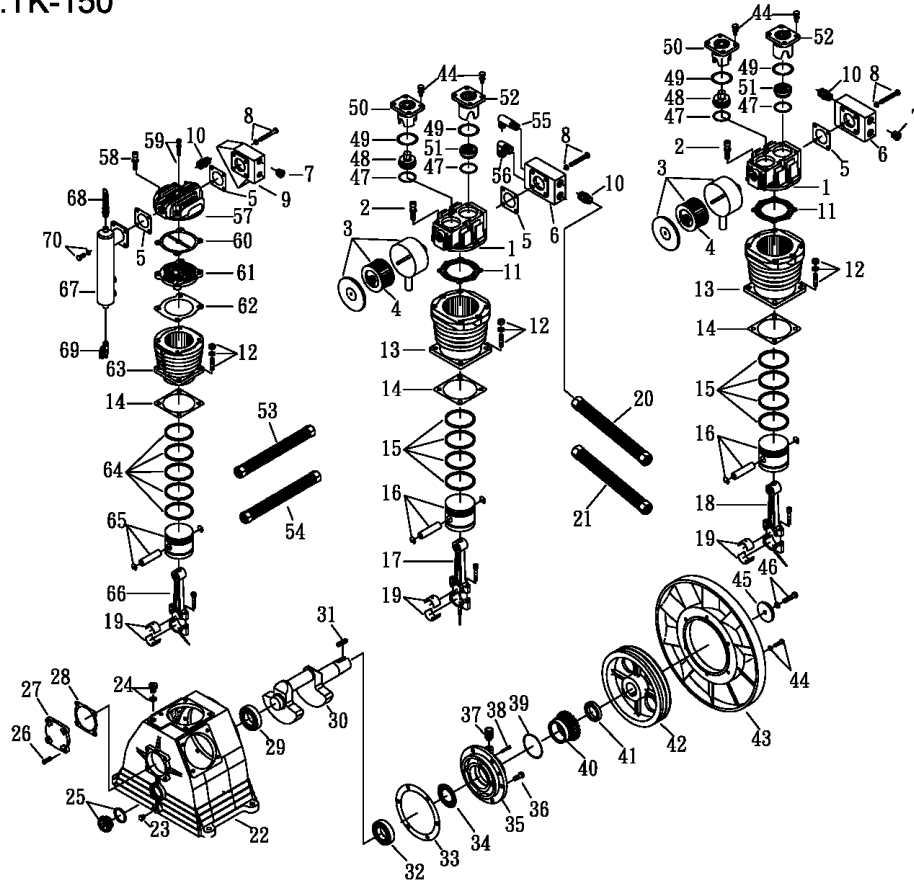


# OMEGA COMPRESSORS

For us, it's not just business. It's personal.

MODE:TK-150

ITEM	TORQUE SPECIFICATIONS
Flywheel	[M-12] 40-42 FT/LBS
Cooling Wheel	[M-8] 22-24 FT/LBS
Rod	[M-10] 10-12 FT/LBS
Exhaust Tube	[M-10] 24-26 FT/LBS
Spare Tank	[M-10] 28-30 FT/LBS
Bearing Seat	N/A
HP-Cylinder Head	[M-12] 43-47 FT/LBS [M-8] 24-26 FT/LBS
LP-Cylinder Head	[M-12] 43-47 FT/LBS [M-8] 24-26 FT/LBS



## SPARE PARTS LIST

NO : QC-0804

REF. NO.	DESCRIPTION	PART NO.	QTY.	REF. NO.	DESCRIPTION	PART NO.	QTY.
1	Cylinder head	3101054	2	36	Hexagon bolt	2B00-SM12*030	6
2	Allen bolt set	2B01-M12*050V	12	37	Breathing cover	2321008	1
3	Air filter	2140011	2	38	Hexagon bolt	2B00-SM06*035	1
4	Filter element	2142009	2	39	O-ring	2N52-568*156	1
5	Exhaust tank gasket	2G09-004	4	40	Trust ring	3312001	1
6	Exhaust tank	3127001	2	41	Oil seal	2N50-TC50*80*13	1
7	Plug	2B14-ST06E	4	42	Pulley	3PBR-138B450	1
8	Hexagon bolt set	2B00-SM10*075V	12	43	Fly wheel	3PBR-630*280	1
9	Exhaust tank	3127002	1	44	Hexagon bolt set	2B00-SM08*030V	22
10	Nipple	2N01-009	7	45	Pulley washer	2B34-13*05*12	1
11	Cylinder head gasket	2G01-020	2	46	Hexagon bolt set	2B00-SM12*050V	1
12	Double head screw set	2B11-005-A	12	47	Inlet&Exhaust washer	2B32-004	4
13	Cylinder	3201044	2	48	Inlet valve assembly	3B12-NK150A	2
14	Cylinder gasket	2G04-008	3	49	O-ring	2N52-G65V	4
15	Piston ring set	3B32-120	2	50	Inlet press plate	3103001	2
16	Piston set	3B31-120NP	2	51	Exhaust valve assembly	3B11-NK150A	2
17	Rod set	3B33-NP150A	1	52	Exhaust press plate	3126009	2
18	Rod set	3B33-NP150B	1	53	Exhaust tube set	3B2-06*580	1
19	Rod bush	2316007-B	3	54	Exhaust tube set	3B2-06*610	1
20	Exhaust tube set	3B2-06*260	1	55	Exhaust elbow	2N06-06T06H85	1
21	Exhaust tube set	3B2-06*205	1	56	Exhaust elbow	2N06-06T06H	1
22	Crankcase	3301052	1	57	Cylinder head	3101024	1
23	Oil draining plug	2N33-003	1	58	Allen bolt set	2B01-M12*065V	4
24	Oil filling plug set	2319004A	1	59	Allen bolt set	2B01-M08*085Z	1
25	Oil sight gauge set	2303015A	1	60	Cylinder head gasket	2G01-012	1
26	Hexagon bolt	2B00-SM10*035	4	61	Inlet&Exhaust valve assembly	3B13-AP100	1
27	Front bearing seat	3309010	1	62	Valve seat gasket	2G03-006	1
28	Front bearing seat gasket	2G05-008	1	63	Cylinder	3201034	1
29	Bearing	2N35-32210	1	64	Piston ring set	3B32-T100	1
30	Crankshaft & balancer	3304151	1	65	Piston set	3B31-T100	1
31	Pulley key	2N47-10*8*45	1	66	Rod set	3B33-NP150C	1
32	Bearing	2N35-30310	1	67	Spare tank	3125003	1
33	Rear bearing seat gasket	2G06-014	1	68	Pressure relief valve	2406020T	1
34	Oil mesh	2352005	1	69	Ball valve	2413001	1
35	Rear bearing seat	3311022	1	70	Hexagon bolt set	2B00-SM10*025V	4