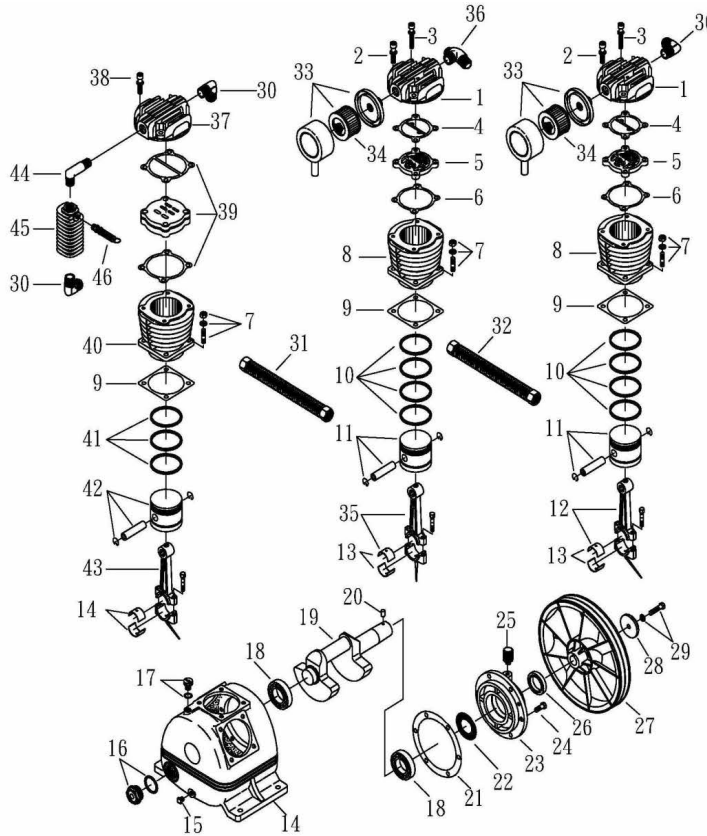


OMEGA COMPRESSORS

For us, it's not just business. It's personal.

MODEL: TK-50

| ITEM | TORQUE SPECIFICATIONS |
|------------------|-----------------------|
| Flywheel | [M-12] 40-42 FT/LBS |
| Cooling Wheel | N/A |
| Rod | [M-10] 10-12 FT/LBS |
| Exhaust Tube | N/A |
| Spare Tank | N/A |
| Bearing Seat | [M-10] 10-12 FT/LBS |
| HP-Cylinder Head | [M-6] 9-11 FT/LBS |
| LP-Cylinder Head | [M-10] 33-37 FT/LBS |
| | [M-6] 9-11 FT/LBS |



SPARE PARTS LIST

NO: QC-1911

| REF. NO. | DESCRIPTION | PART NO. | QTY. | REF. NO. | DESCRIPTION | PART NO. | QTY. |
|----------|---------------------------|---------------|------|----------|--------------------------|-----------------|------|
| 1 | Cylinder head | 3101018 | 2 | 24 | Hexagon bolt | 2B00-SM10*025 | 6 |
| 2 | Allen bolt set | 3B01-M10*050V | 8 | 25 | Breathing cover | 2321008 | 1 |
| 3 | Allen bolt set | 3B01-M06*055Z | 4 | 26 | Oil seal | 2N50-TC30*50*11 | 1 |
| 4 | Cylinder head gasket | 2G01-011C | 2 | 27 | Pulley | 3PBF-145A230M | 1 |
| 5 | Inlet&Exhaust valve | 3B13-AP80 | 2 | 28 | Pulley washer | 2B34-13*52*14 | 1 |
| 6 | Valve seat gasket | 2G03-005C | 2 | 29 | Hexagon bolt set | 3B00-SM12*050V | 1 |
| 7 | Double head screw set | 3B11-003-A | 12 | 30 | Exhaust elbow | 2N06-06T06H | 3 |
| 8 | Cylinder | 3201015 | 2 | 31 | Exhaust tube set | 3B2-06*490 | 1 |
| 9 | Cylinder gasket | 2G04-009 | 3 | 32 | Exhaust tube set | 3B2-06*235 | 1 |
| 10 | Piston ring set | 3B32-80N | 2 | 33 | Air filter | 2140009 | 2 |
| 11 | Piston set | 3B31-80L | 2 | 34 | Filter element | 2142002 | 2 |
| 12 | Rod set | 3B33-P2346 | 1 | 35 | Rod set | 3B33-P2337 | 1 |
| 13 | Crank rod bush (2 pieces) | 2316001-B | 3 | 36 | Exhaust three way pipe | 2N09-06H06T06H2 | 1 |
| 14 | Crankcase | 3301017 | 1 | 37 | Cylinder head | 3101043 | 1 |
| 15 | Oil draining plug | 2N33-002 | 1 | 38 | Allen bolt set | 3B01-M06*040V | 4 |
| 16 | Oil sight gauge set | 2303012A | 1 | 39 | In. & Ex. valve assembly | 3B13-K5065C | 1 |
| 17 | Oil filling plug set | 2319004B | 1 | 40 | Cylinder | 3201029 | 1 |
| 18 | Bearing | 2N35-6306 | 2 | 41 | Piston ring set | 3B32-65N | 1 |
| 19 | Crankshaft & balancer | 3304025 | 1 | 42 | Piston set | 3B31-T65 | 1 |
| 20 | Pulley key | 2N47-63*09 | 1 | 43 | Rod set | 3B33-T5048 | 1 |
| 21 | Rear bearing seat gasket | 2G06-002 | 1 | 44 | Exhaust elbow | 2N06-06T06T85 | 1 |
| 22 | Oil mesh | 2352002 | 1 | 45 | Spare tank | 3125001 | 1 |
| 23 | Rear bearing seat | 3311003 | 1 | 46 | Pressure relief valve | 2406020A | 1 |