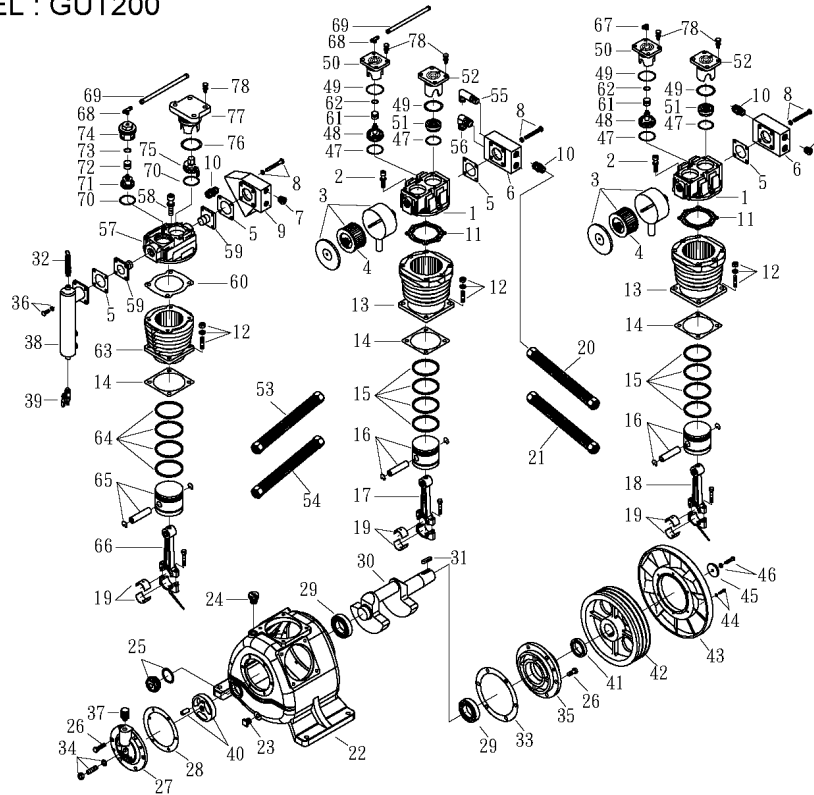


OMEGA COMPRESSORS

For us, it's not just business. It's personal.

MODEL : GUT200



SPARE PARTS LIST

NO : QC-2004

REF. NO.	DESCRIPTION	PART NO.	QTY.	REF. NO.	DESCRIPTION	PART NO.	QTY.
1	Cylinder head	3101054	2	40	Thrust block set	3312008-A	1
2	Allen bolt set	3B01-M12*045V	12	41	Oil seal	2N50-TC50*72*12	1
3	Air filter set	2140011	2	42	Pulley	3PBF-138B450	1
4	Filter element	2142009	3	43	Fly wheel	3PBF-630*280	1
5	Exhaust tank gasket	2G09-004H	2	44	Hexagon bolt set	3B00-SM08*035AV	6
6	Exhaust tank	3127001	2	45	Pulley washer	2B34-13*95*12	4
7	Plug	2B14-ST06E	4	46	Hexagon bolt set	3B00-SM12*050V	1
8	Hexagon bolt set	3B00-SM10*075V	12	47	Inlet&Exhaust washer	2B32-004	1
9	Exhaust tank	3127002	1	48	Inlet valve assembly	3B12-MUK150A	4
10	Nipple	2N01-009	7	49	O-Ring	2N52-G65V	2
11	Cylinder head gasket	2G01-020C	2	50	Inlet press plate	3103002	2
12	Double head bolt set	3B11-004-A	12	51	Exhaust valve assembly	3B11-NK150A	2
13	Cylinder	3201044	2	52	Exhaust press plate	3126009	2
14	Cylinder gasket	2G04-008	3	53	Exhaust tube set	3B2-06*610	1
15	Piston ring set	3B32-120N	2	54	Exhaust tube set	3B2-06*630	1
16	Piston set	3B31-120NP	2	55	Exhaust elbow	2N06-06T06H85	1
17	Rod set	3B33-GK200A	1	56	Exhaust elbow	2N06-06T06H	1
18	Rod set	3B33-NP150B	1	57	Cylinder head	3101049	1
19	Rod bush(2 pieces)	2316007-B	3	58	Allen bolt set	3B01-M12*065V	4
20	Exhaust tube set	3B2-06*255	1	59	Frangle	3156007	2
21	Exhaust tube set	3B2-06*205	1	60	Cylinder head gasket	2G01-008C	1
22	Crankcase	3301137	1	61	Unloading piston	2113008	1
23	Oil draining plug	2N33-003	1	62	O-Ring	2N52-P22AV	2
24	Oil filling plug set	2319004B	1	63	Cylinder	3201034	1
25	Oil sight gauge set	2303015A	1	64	Piston ring set	3B32-T100N	1
26	Hexagon bolt	2B00-SM10*025	12	65	Piston set	3B31-T100	1
27	Front bearing seat	3309042	1	66	Rod set	3B33-NP150C	1
28	Front bearing seat gasket	2G05-009	1	67	Unloading elbow	2N06-01T02H	1
29	Bearing	2N35-32210	2	68	Unloading 3-way pipe	2N09-02M1T02H4	2
30	Crankshaft & balancer	3304151	1	69	Unloading tube set	3B2-02*630N	1
31	Pulley key	2N47-10*8*45	1	70	Inlet&Exhaust washer	2B31-002	2
32	Pressure relief valve	2406020A	1	71	Inlet valve assembly	3B12-P075	1
33	Rear bearing seat gasket	2G06-020	1	72	Unloading piston	2113010	1
34	Bolt set	3B07-SM16*40-A	1	73	O-Ring	2N52-P21V	1
35	Rear bearing seat	3311029	1	74	Inlet press plate	3110010	1
36	Exhaust elbow	3B00-SM10*025V	4	75	Exhaust press plate	3126005	1
37	Breathing cover	2321008	1	76	O-Ring	2N52-G55V	1
38	Spare tank	3125003	1	77	Exhaust valve assembly	3B11-HL75	1
39	Ball valve	2413010	1	78	Hexagon bolt set	3B00-SM08*030V	20