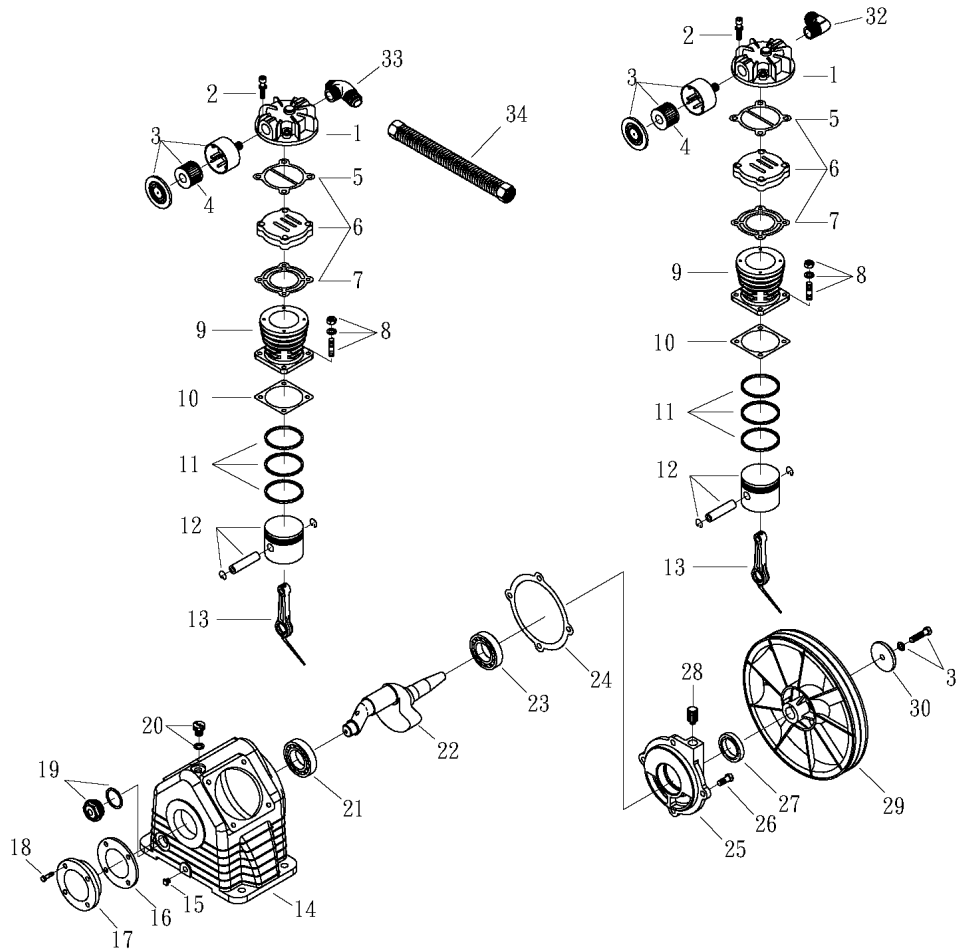


OMEGA COMPRESSORS

For us, it's not just business. It's personal.

CK-32

ITEM	TORQUE SPECIFICATIONS
Flywheel	[M-8] 22-24 FT/LBS
Cylinder	[M-8] 22-24 FT/LBS
Bearing Seat	[M-8] 8-10 FT/LBS [M-6] 6-8 FT/LBS
Cylinder Head	[M-6] 9-11 FT/LBS



SPARE PARTS LIST

NO:QC-2103

REF. NO.	DESCRIPTION	PART NO.	QTY.	REF. NO.	DESCRIPTION	PART NO.	QTY.
1	Cylinder head	3101084A	2	18	Hexagon bolt	2B00-SM06*020	4
2	Allen bolt set	3B01-M06*040V	8	19	Oil sight gauge	2303012A	1
3	Air filter set	2140020A	2	20	Oil filling plug	2319003A	1
4	Filter element	2142013	2	21	Bearing	2N35-6204	1
5	Cylinder head gasket	2G01-015C	2	22	Crankshaft & balancer	3304098	1
6	In. & Ex. valve assembly	3B13-K5065C	2	23	Bearing	2N35-6205Z	1
7	Valve seat gasket	2G03-010H	2	24	Rear bearing seat gasket	2G06-008	1
8	Double head screw set	3B11-001-A	8	25	Rear bearing seat	3311034	1
9	Cylinder	3201083	2	26	Hexagon bolt	2B00-SM08*020	4
10	Cylinder gasket	2G04-003	2	27	Oil seal	2N50-TC24*47*07	1
11	Piston ring set	3B32-65N	2	28	Breathing cover	2321008	1
12	Piston set	3B31-65N	2	29	Pulley	3PBF-105A124	1
13	Rod set	3B33-CK3033	2	30	Plate washer	2B30-08*35*35	1
14	Crankcase	3301117	1	31	Hexagon bolt	3B00-SM08*035AV	1
15	Oil draining plug	2N33-002	1	32	Exhaust elbow	2N06-04T04H	1
16	Front cover gasket	2G05-018	1	33	Exhaust three way pipe	2N09-04H04T04H1C	1
17	Front cover	3309043A	1	34	Exhaust tube set	3B2-04*240	1