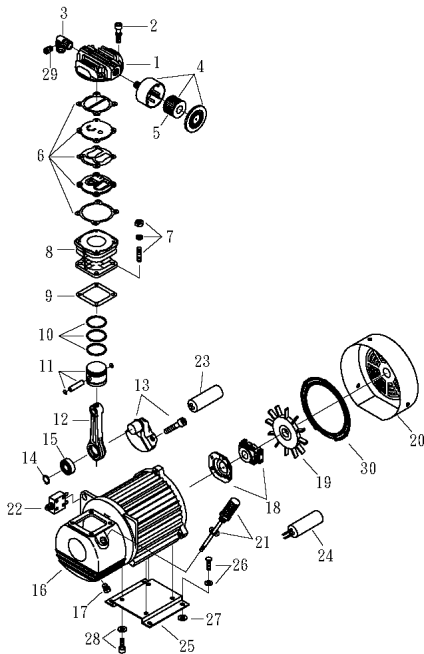


OMEGA COMPRESSORS

For us, it's not just business. It's personal.

MODEL :DD-3008 (Pump)

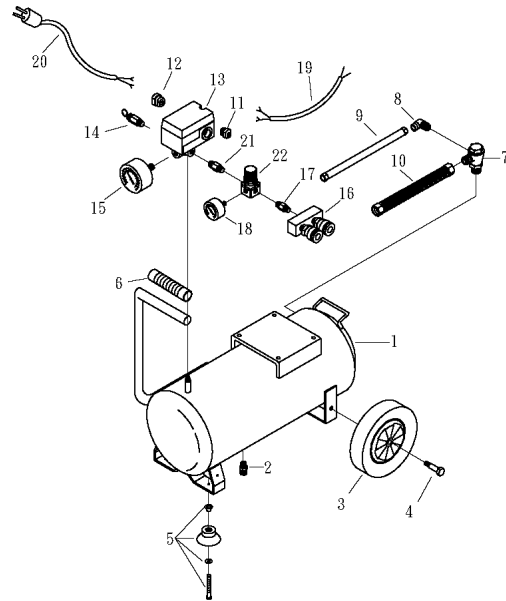


SPARE PARTS LIST

NO : QC-1501

REF. NO.	DESCRIPTION	PART NO.	QTY.	REF. NO.	DESCRIPTION	PART NO.	QTY.
1	Cylinder head	3101047	1	16	Motor set	388-NB152	1
2	Allen bolt set	3801-M06*040V	4	17	Oil draining plug	2N35-001	1
3	Exhaust elbow	2N06-04T04H02T	1	18	Centrifugal switch set	2E24-19084P	1
4	Air filter set	2140920A	1	19	Cooling fan	2330002	1
5	Filter element	2142013	1	20	Fan cover	2337005	1
6	Inlet&Exhaust valve assembly	3R15-ACR0765	1	21	Dipstick set	2339008A	1
7	Double head screw set	3R11-008-A	4	22	Circuit breaker	2E25-18A	1
8	Cylinder	3201030	1	23	Straining capacitor	2E28-300F1240	1
9	Cylinder gasket	2C04-003	1	24	Running capacitor	2E27-070F2540	1
10	Piston ring set	3R32-65N	1	25	Motor seat	3421013	1
11	Piston set	3R31-65N	1	26	Hexagon bolt set	3R00-FM08*020V	4
12	Rod	2315003	1	27	Motor seat block	2439008	4
13	Crankshaft & balancer	3304063	1	28	Allen bolt set	3R01-M08*020V	4
14	Retainer	2N42-S20	1	29	Auto relief valve	2409012	1
15	Bearing	2N35-6204	1	30	Fen net	2E31-001	1

MODEL :DD-3008 (Receive Tank)



SPARE PARTS LIST

NO : QC-1501

REF. NO.	DESCRIPTION	PART NO.	QTY.	REF. NO.	DESCRIPTION	PART NO.	QTY.
1	Air tank	3401265QC	1	12	Strain relief bushing	2E04-012	1
2	Drain valve	2405011	1	13	Pressure switch	2E21-R027DC	1
3	Tank wheel	2402042B	2	14	Pressure relief valve	2406018A	1
4	Wheel bolt	2418005	2	15	Pressure gauge	2D12-20D2001Q	1
5	Rubber pad set	3433011-A	2	16	Quick coupler	07MAC2B-C	1
6	Grip	2432004	1	17	Nipple	2N01-001	1
7	Check valve	2414025	1	18	Pressure gauge	2D12-15D2001Q	1
8	Unloading elbow	2N06-01T02H	1	19	Cable	2E02-2030602Y2T	1
9	Unloading tube	3R2-02*600F	1	20	Power cable	2E01-012W	1
10	Exhaust tube	3R2-04*500	1	21	Nipple	2N01-02N02N045	1
11	Strain relief bushing	2E04-009	1	22	Regulator	2408025L	1